

Do you hear voices?

If you spend a lot of time thinking about music, you probably have all sorts of sounds running around in your head.

However. What you hear in your mind you just don't hear in your ears. Because your instrument just can't produce it.

Unless, of course, you're playing the Kurzweil 250.™ An instrument engineered to produce any sound anyone can imagine. In all its glory.

To get great sound, you have to start with great sound.

Our engineers use Contoured Sound Modeling™ to capture the sounds of real instruments. Contoured Sound Modeling has given the world the famous Kurzweil Grand Piano, Strings and Human Choir.

But if our engineers were merely good engineers, those

voices would sound, well, engineered. Why don't they? Because our engineers are even better musicians. And as such, they not only use a careful blending of instrument, performer, acoustics, recording techniques and signal processing. They also depend on a tool older than music itself. The human ear.

How did we get the Steinberger™ into our Sound Library? Very carefully.

Total control at your fingertips.

If you can press a button, you can call up any of the Kurzweil 250's 45 resident voices and 124 keyboard setups. Instantly. Because they're all in the Kurzweil 250's massive on-board memory. That way, you won't ever have to mess around with disks.

Then play any voice or setup on the Kurzweil 250's velocity sensitive, 88-key wooden keyboard. Which is weighted to feel like a grand piano. So it can be as expressive as a grand piano.

And just as important, the

Kurzweil 250 has a built-in 7900-note 12-track sequencer that lets you compose your own complex arrangements. Edit any note, edit any track, insert notes or change tempos and volumes. And once you're satisfied with what you've got, there's quantization to clean up slight timing errors.

You get more out of MIDI here.

MIDI is available on a lot of keyboards. But no keyboard instrument lets you do with MIDI what you can do with the Kurzweil 250.

As either master controller or slave, it gives you access to virtually all of the Kurzweil 250 control functions.

If you can sample it, you can play it.

Say "hello" to the Kurzweil 250.

Next thing you know, you'll be hearing "hello" in 4-part harmony. Or 6 part harmony, or 12. How? With our Sound Modeling Program.™

You just plug in a mic (or patch in a line), and off you go. Our Sound Modeling Program will then let you sample your own sounds.

Afterward, do virtually anything with any sound. Compad it, trim it, loop it or play it backwards. Play it like you would any resident voice. Even

layer it onto any resident voice. Imagine Kurzweil Strings that turn into the wind. Or thunder. Or vice versa. Anything you can hear in this universe, you can hear on the Kurzweil 250.

Stay tuned.

Today, the Kurzweil 250 is the single best, most expressive instrument you can buy. But it's not alone.

We've introduced the Kurzweil 250 Expander, a portable expander package that you can MIDI to any MIDI keyboard.

We've added the Kurzweil Sound Library, a growing collection of sounds on Macintosh™ disks.

And we will be adding even more in the future.

But whatever we bring to the Kurzweil 250 will always be for the same reason. So the voices you're hearing, everyone can hear.

To find out more about the Kurzweil 250,



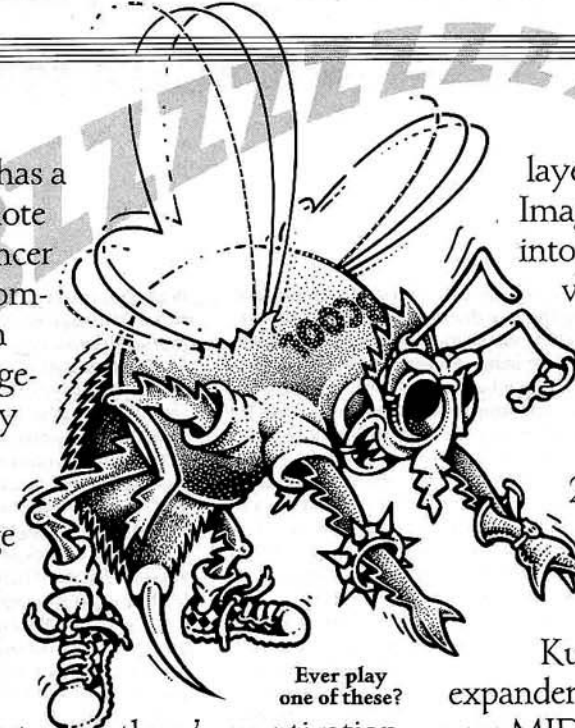
Finally, an instrument that lets you hear in your ears what you hear in your mind.

visit your local Kurzweil retailer, or call us at (617) 893-5900. Or send \$6.95 (Massachusetts residents add 35¢ tax) for a copy of our 50 minute demo cassette, to Kurzweil Demo Cassette, P.O. Box 863, Providence, RI 02901.

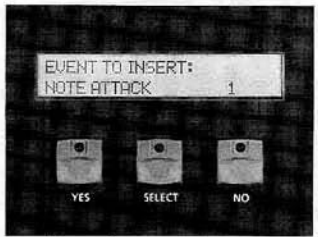
Kurzweil Music Systems, Inc.,
411 Waverley Oaks Road, Waltham, MA
02154-8464.

Macintosh is a licensed trademark of Macintosh Laboratories, Inc.

KURZWEIL™



Ever play one of these?



12 tracks, no waiting.