

# NO OTHER ELECTRONIC KEYBOARD WOULD DARE MAKE THIS COMPARISON.

In July of 1983, *High Technology* magazine, reporting on the new Kurzweil 250, said it "emulates with unprecedented fidelity the sound and feel of an acoustic piano." And *Musician* said it "could set the field on its collective ear."

Because while other electronic keyboards sound similar to pianos, only one duplicates the richness of tone of a \$35,000 concert grand—in all registers, at all loudnesses—from the initial attack of each note until its eventual decay.

And what this remarkable new keyboard does with the concert grand, it does with every other instrument as well: brass, strings, woodwinds, percussion, vocal chorus—even sound effects.

The Kurzweil 250's astonishing sound is the result of new technology developed by Raymond Kurzweil, one of the world's leading authorities on Artificial Intelligence and Pattern Recognition. Using insights gained from these fields, Kurzweil and his team of engineers developed Contoured Sound Modeling,™ an exclusive approach to sound synthesis that enables the Model 250 to preserve all the complexities of acoustic sound.

For example, a middle C on the piano activates a very different set of overtones than an F# two octaves above it. The Kurzweil 250 takes this into account and accurately duplicates this changing harmonic structure across its entire keyboard.

And unlike other electronic keyboards, which cut the duration of each note in half at each higher octave, the Kurzweil 250 has Independent Pitch Duration Control,™ which controls independently the length of time each note is heard, regardless of its pitch.

Also, through the use of Artificial Intelligence technology, the Kurzweil 250 "knows" that changes in loudness affect the timbre of a note. This means that notes played softly on the Model 250 sound mellow; the same notes played loudly sound bright. (And the Model 250's exclusive, velocity-sensitive keyboard action further helps you capture the feel and dynamic response of a grand piano.)

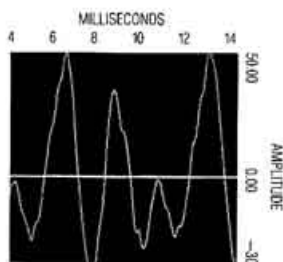
So if you want sound that's so realistic, it's virtually impossible to distinguish from the original, go to an authorized Kurzweil dealer and listen to our Model 250.

In the world of electronic keyboards, there is no comparison.

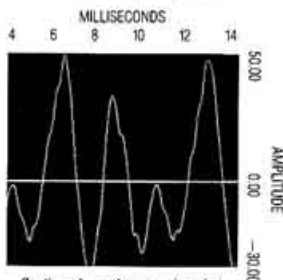


## KURZWEIL™

YOU CAN'T TELL THE DIFFERENCE.



Section of waveform produced at middle "C" by a \$35,000 concert grand piano.



Section of waveform produced at middle "C" by a Kurzweil 250.™