

ANALOGUE SOLUTIONS

synthesis / sequencing / effects / control

Semblance - 2 VCO / 4 Filter Analogue Monosynth



Semblance is a self contained TRUE analogue synthesiser. The voice circuitry is entirely analogue, using all discrete and op-amp components. There is no voice DSP happening!

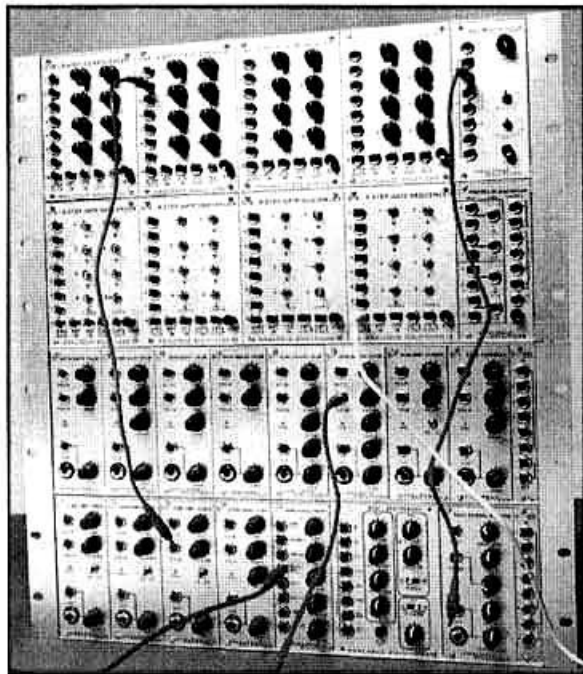
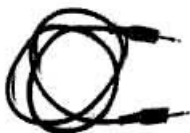
Semblance has a similar sound and specification to the classic Oberheim SEM, but with many improvements such as MIDI, Noise, more modulation. Note however, Semblance is not intended to be and is not a clone of the SEM. If you want a true SEM sound, buy a SEM!

Semblance has a Poly mode, to allow four Semblances to be daisy chained together and be used as one big 4-voice poly synth!



Concussor Synthesizer Modules

Over 30 modules that you can combine in any combination for your own custom modular synth.



Filtered Coffee - Filter effect unit

Features; High Pass filter, Low Pass filter, 2 LFOs, VCA, Envelope Follower, many modulation possibilities, 14 rear panel sockets for high connectivity, true analogue sound path.

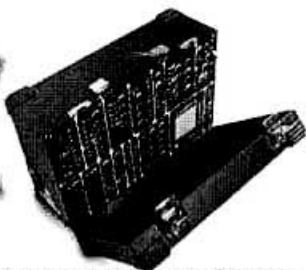
The Filtered Coffee emulates the awesome Korg MS20 monosynth filter sound with true analogue circuitry, for anything from a warm to a dirty sound.

The signal path can be distorted in many ways. The input level, high pass filter or the low pass filters can be distorted the sound subtly or extremely. The 2 resonance feedback circuits of the filters can be really overdriven for a truly dirty analogue sound that has to be heard to be believed!

Put any dull digital sound through this unit and get something wholly useful and dramatic out the other end!

MANY MORE PRODUCTS IN DEVELOPEMENT!!

VOSTOK



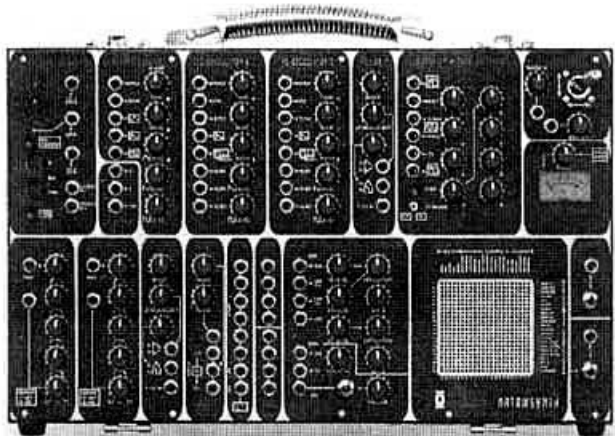
A portable modular analogue synthesiser in a convenient 'suit case' with a hinged & detachable front panel.

A vital component for any modern studio overcrowded with soul-less digital instruments. The Vostok will breathe new life into your music productions with subtle warm sounds or, if you prefer, obnoxious fat analogue sound effects.

Matrix Patch Panel - utilises a matrix pin patch panel with a whopping 22x22 connection size. Connections between the various synthesiser circuits are obtained by using small patch pins, which are inserted into the relevant grid position on the patch panel thereby connecting the various circuits together in the desired configuration.

The matrix panel gives the patching versatility of a modular without the need for confusing front-panel interfering patch cables. It's the hottest & most versatile method of creating patches.

The Vostok is ideal for those new to modulars, whilst still providing great versatility for the experts. Its clear and concise layout is so easy to understand, even a Russian monkey test pilot could operate it. Comrades, I present Vostok!



Main Specifications;

MIDI to CV Converter - 16 bit.

Joystick.

Sequencer - 8 step CV & gate analogue sequencer.

VCO1 - saw, square, triangle waves, glide, sync.

VCO2 / VCO3 - saw, square waves, PWM, glide, sync.

Noise

VCF - low pass filters and high pass filters (& band pass).

VCA - Voltage Controlled Amplifier.

RM - Ring Modulator.

EG 1 / EG 2 - ADSR envelope generators.

VCLFO1 / VCLFO2 - Saw, reverse Saw, Sqr, Tri LFOs.

S+H - Sample and Hold with slew generator.

Mixer - 8 input with normal and inverse outputs.

Signal Meter - moving coil signal meter.

Multiples 1 and 2.

Matrix Patch Panel - Utilising matrix pin patch panel with 22x22 connections.

Jack socket patch points provided for additional internal & external patching & interfacing.

12 LEDs.

Steel case - portable suitcase with shiny catches, carry handle & lift off cover.

Power - internal filtered transformer, IEC lead connection, double fused, power switch.

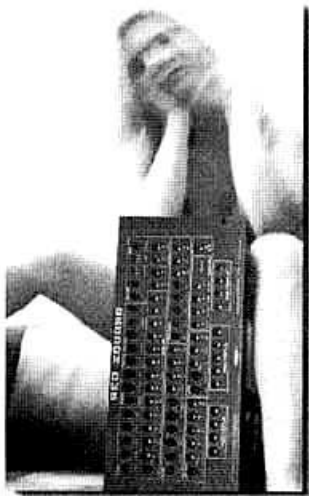


**RED
SQUARE**

Red Square is a patchable analogue monosynth. It has some of the advantages of a modular synth (re-wireable synth circuits, external control, external signal routing) and the advantages of a pre-patched monosynth (easy to use, instant sound, tidy front panel).

Red Square introduces 'modular synthesis' style sound creation for all those that are either daunted by the complexities of modulars, do not have to space for them, or simply find them too expensive.

Red Square gives you the opportunity to create a diverse range of sounds by using patch cables (1/4" sockets) to re-route the signals. It remains quick and easy to use as its design is in a more familiar monosynth format.



ANALOGUE SOLUTIONS

Contact us for more information or see our web site;

Tel / Fax: +44 (0) 1384 35 36 94

56 Kingsley Road, DY6 9RX, UK

www.analoguesolutions.com